

TEL NEWS

Welcome to TEL News



We filmed the first of the short films as part of the Simulation project at Queen Elizabeth Hospital Birmingham. Turn to page three to read the full update on this piece of work.

TEL News is your monthly update keeping you up to speed with all that is Technology Enhanced Learning (TEL) in healthcare. TEL News includes information from Health Education England's (HEE) TEL Programme team, the e-Learning for Healthcare Programme, e-Learning and simulation Leads across the local offices and other updates we think you will find useful. We're keen to spread the news about TEL so would be grateful if you would share it throughout your own networks. If a colleague would like adding to the distribution list please ask them to email tel@hee.nhs.uk providing their contact details.

November 2017

TEL Programme update



commissioners and learners to share, access, discuss and collaborate around learning resources. We set out to understand, from a technical and user experience perspective, the various needs of users and how they could be met.

Our aims were to:

- build a prototype of the service
- test the prototype and wireframes with users
- demonstrate that the proposed service is technically possible.

On 16 November, our alpha team took part in a service assessment where our work was tested against the 18 points of the Digital Service Standard. We are awaiting the report from the assessment, which provides us with feedback and recommendations for the beta phase. We are also reviewing and finalising the overall report on the work completed in the alpha phase.



Digital by Default Service Standard



A lot of hard work has gone into the alpha phase over the last six months. We would like to thank everyone that has been involved for their support and feedback, which has helped us develop a successful prototype to further build upon.

The next stage is the beta development phase. We will, of course, keep you updated on our progress.

For more information about the Learning Solution please visit our website: www.hee.nhs.uk/tel

Simulation work progresses

Thank you to those colleagues who completed and returned the simulation questionnaire. We were extremely pleased with the responses received, as almost all thirteen area offices were able to contribute by the deadline. We appreciate how challenging this has been, given so many recent changes, and would like to express our thanks and gratitude. It shows the strong levels of engagement and how passionately people feel about simulation in their geography.

The Simulation Reference Group (SRG), with representatives from these thirteen areas, is meeting on 7 December 2017 to review the first draft of the principles of the strategy. Information gathering, stakeholder meetings and visits to local simulation centres will continue to ensure that everyone's share of voice is enabled.



We are also pleased to announce that filming of the short films began earlier this month. These six separate short films will share real experiences of simulation and also allow HEE to share its rationale and vision behind the strategy project.

In addition, the first We Communities Twitter chat on simulation is scheduled to take place on 19 December with the nursing community using #wenurses. The Twitter chat will enable the nursing community to share their thoughts, experiences and concerns about simulation and the impact it has on their own training. Further WeCommunities Twitter chats are scheduled for early next year. We are hosting a chat with the WeMDT community on 22 February 2018.

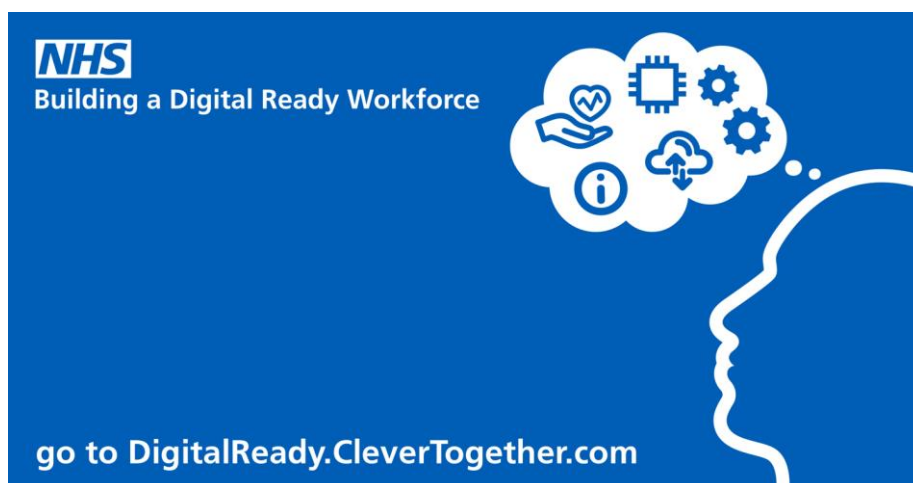
The first of the simulation films was filmed at Queen Elizabeth Hospital in Birmingham.

If you are learner interested in attending a lunchtime focus group on 23 January 2018 in London please email tel@hee.nhs.uk to express your interest. This will be an excellent opportunity to share inter-disciplinary, multi-professional experiences and to comment on the development of the simulation strategy. Places are limited and will be allocated on a first come, first served basis.

..

Building a Digital Ready workforce digital literacy consultation

Health Education England, NHS England and NHS Digital, the agencies responsible for Building a Digital Ready Workforce (BDRW), want to hear from informaticians as part of the digital literacy project. We are working with an agency called Clever Together to work with health and care professionals to understand and improve the digital maturity of informaticians in our health and care workforce.



From 22 November 2017, Clever Together will host a three-week national online workshop at DigitalReady.CleverTogether.com to explore the needs and experiences of informaticians - it will be a national conversation in partnership with BCS Health and Care, Federation of Informatics Professionals and the Faculty of Clinical Informatics.

The results of the online workshop will form the basis for how the Digital Ready Workforce programme will prioritise and invest £6m over the next four years.

We would like to invite colleagues who work within the broad range of roles that are classed as informatics in the NHS to take part in this important work. To find out more, visit: <https://digitalready.clevertogogether.com/sign-up?src=heetel>

For more information about our digital literacy project please visit www.hee.nhs.uk/tel

e-Learning for Healthcare update

The HEE e-LfH team is constantly updating existing and launching new e-learning sessions. For the schedule of when new sessions will be launched please follow this link: www.e-lfh.org.uk/planned-programmes.



New e-learning programme to improve care for babies, mothers and families



A new e-learning programme has been launched to help healthcare professionals improve outcomes for babies, mothers and families through the delivery of safer care.

The learning modules, developed by e-Learning for Healthcare, NHS Improvement and a range of experts, focus on four clinical areas:

- respiratory conditions
- hypoglycaemia
- jaundice
- asphyxia (perinatal hypoxia–ischaemia).

An additional module also raises awareness of the importance of keeping mother and baby together.

The programme is part of the Avoiding Term Admissions into Neonatal units “Atain” initiative, which aims to reduce avoidable causes of harm that can lead to infants born at term (ie $\geq 37+0$ weeks gestation) being admitted to a neonatal unit.

The e-learning programme was officially launched by the Secretary of State as part of his maternity safety announcements and Mothers and Babies: Reducing Risk through Audits and Confidential Enquiries across the UK (MBRRACE) on 28 November 2017.

For more information about the programme please click here: <https://www.e-lfh.org.uk/programmes/avoiding-term-admissions-into-neonatal-units/>

Ultrasound e-learning updates

2017 has been a busy year for e-LfH’s Image Interpretation programme. The Gynaecological, Abdominal, Men’s Health and Obstetric ultrasound sessions were reviewed and updated in the summer and the remaining ultrasound sessions are currently under revision.

There are seven modules on ultrasound; each contains a number of sessions as indicated below:

- Module 15 - Gynaecological Ultrasound - 9 sessions
- Module 16 - Abdominal Ultrasound - 19 sessions
- Module 17 - Men's Health Ultrasound - 3 sessions
- Module 18 - Vascular Ultrasound - 8 sessions
- Module 19 - Musculoskeletal Ultrasound - 11 sessions
- Module 20 - Head and Neck Ultrasound - 5 sessions
- Module 21 - Obstetric Ultrasound - 15 sessions and 15 multiple choice quizzes

The sessions have been written by expert ultrasound practitioners, and updated by the module editors.

Hazel Edwards, Sonographer, East and North Hertfordshire NHS Trust, said: “It was a pleasure to revisit and upgrade these sessions. I’d forgotten how much detail they contain! National guidance has been updated where appropriate, clarity has been improved and, where possible, images have been replaced by ones of superior quality. I look forward to feedback from users.”

Gill Harrison, Ultrasound Programme Director at City, University of London, said: “These resources are invaluable for CPD, not only for new practitioners, but for those extending their scope of practice or simply wanting to keep up-to-date. Obstetric ultrasound policies have changed so much since the original versions were produced. I’m hoping that the amendments and improvements enhance the resources and you enjoy learning from them.”

Image Interpretation - Abdominal Ultrasound: Kidneys



Common Normal Variants ▶ Horseshoe Kidney - Intravenous Urogram

Menu Previous 10 / 33 Next

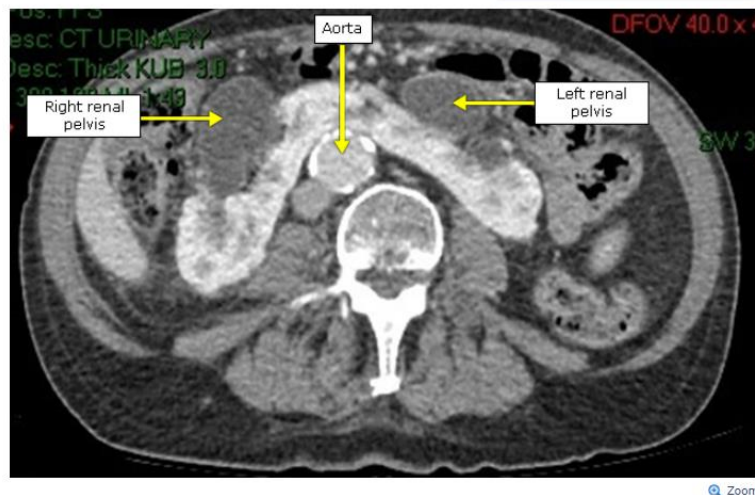
Select the hyperlinks below.

Image 1 is an [intravenous urogram \(IVU\)](#) of the same horseshoe kidney as shown on the previous page.

The collecting system is highlighted well by contrast medium however, the [cortical outline](#) is faintly visible.

Note the medial orientation of the lower poles giving the kidney the characteristic horseshoe shape.

Computed tomography urography (CTU) has replaced IVU. [Image 1](#) clearly demonstrates a horseshoe kidney. [Image 2](#) shows the horseshoe kidney of a 77-year-old man. Note the separate collecting systems and the aorta with calcification in its wall.



Zoom

© Copyright [The College of Radiographers](#) 2015 | Reviewed in 2017

Print Accessibility Resources Help

The horseshoe kidney of a 77-year-old man from the session Image Interpretation - Abdominal Ultrasound: Kidneys.

Dorothy Keane, Image Interpretation Clinical Lead, will be offering guided walkthroughs of the sessions at the British Medical Ultrasound Society (BMUS) Ultrasound event 6-8 December 2017 <https://www.bmus.org/mediacentre/events/ultrasound-2017/>

- To access the free Image Interpretation e-learning sessions, please register at: <http://portal.e-lfh.org.uk/>.
- For information about the programme please visit: <http://www.e-lfh.org.uk/programmes/image-interpretation/>.

Literature Searching e-learning goes live



We have worked with librarians at Lancashire Teaching Hospitals NHS Foundation Trust and Buckinghamshire Healthcare NHS Trust, to develop e-learning modules to support health and social care professionals to find evidence for their work and study.

The modules have been developed for clinical and non-clinical staff to help build confidence in conducting a literature search and are suitable for novice searchers and those wishing to refresh their knowledge. Each of the modules should take no more than 20 minutes to complete and are structured in such a way that each module can be “dipped into” for reference, or completed in full during one session.

Three of the seven modules are now live, with the remaining four being due to launch soon. The live modules are:

Module 1 Introduction to searching

Module 2 Where do I start searching?

Module 3 How do I start to develop a search strategy?

To access the e-learning visit: <https://www.e-lfh.org.uk/programmes/literature-searching/>

If you require further assistance contact your local healthcare library team. Check the Health Library and Information Services Directory to find your local library.

If there is no arrangement in place, your key contact is the Regional Library and Knowledge Services lead:

HEE London and the South East

louise.goswami@hee.nhs.uk

HEE Midlands and the East

ruth.carlyle@hee.nhs.uk

HEE North

david.stewart@nhs.net

HEE South

helen.bingham@hee.nhs.uk

For more information about anything you have read in this update please email tel@hee.nhs.uk