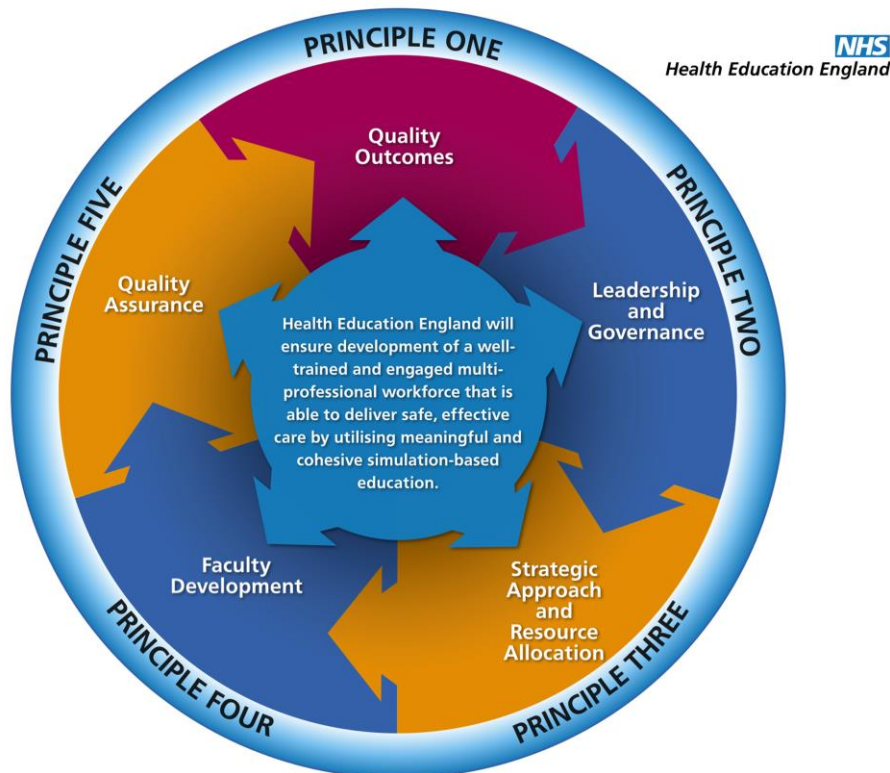


# TEL NEWS

## Welcome to TEL News



The Simulation-Based Education team has further developed the visual (above) to help explain the (SBE) Framework to stakeholders. See page 2 for an SBE update.

TEL News is your monthly update keeping you up to speed with all that is Technology Enhanced Learning (TEL) in healthcare. TEL News includes information from Health Education England's (HEE) TEL Programme team, the e-Learning for Healthcare Programme, e-Learning and simulation Leads across the local offices and other updates we think you will find useful. We're keen to spread the news about TEL so would be grateful if you would share it throughout your own networks. If a colleague would like adding to the distribution list please ask them to email [tel@hee.nhs.uk](mailto:tel@hee.nhs.uk) providing their contact details.

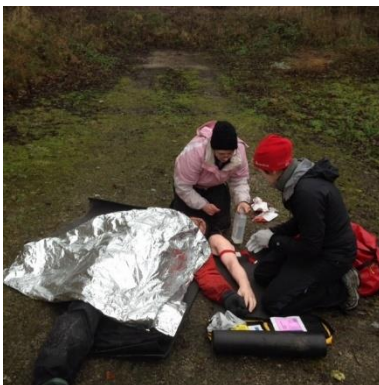
## TEL Programme update



### Simulation work continues to move at pace

#### The SBE Framework

The last pieces of filming have been completed in support of the strategic framework for Simulation-Based Education (SBE). The suite of five films will be introduced by Alan Ryan, Director of National Programmes, and Dr Neil Ralph, TEL Programme Lead. An explanation as to what SBE entails will be given by Chris Munsch, a senior cardio-thoracic surgeon and Chair of the TEL steering group.



SBE in practice

In the introduction to the films, Alan Ryan emphasises the key performance indicators (KPIs) that have been developed are deliberately being kept 'light touch' to ensure engagement. Throughout the conversations held during the development of the framework, the consensus was that not only was a framework necessary, but a means of ensuring its efficacy was just as important.

Round two of the task and finish groups has also just begun, with Quality Outcomes being the first which was held last week. As has been previously noted, these task and finish groups will start producing the guidance, exemplars and support for the delivery of SBE so that the framework becomes fully embedded over the next year or so.

#### Other SBE-related work

As the SBE project has progressed, its far-reaching uses have become more apparent. A number of small projects have developed as a result including HEE working towards developing a Memorandum of Understanding (MOU) with the Healthcare Safety Investigation Branch (HSIB) to look at ways of using SBE in accident prevention.

This was a result of an introduction through one of the task and finish groups, when senior and principal investigators talked about commonly recurring health and safety issues and how the use of SBE might be considered in their prevention.

Early discussions are also underway with Nick Peres, Head of Technology R&D at Torbay and South Devon NHS Foundation Trust, about the possibility of using VR simulation scenarios in GP recruitment. (Torbay Horizon Centre is pictured right.)



## AI pilot update

As September approaches, our two Artificial Intelligence (AI) pilots with *Filtered* and with *Leeds Institute of Medical Education* are ready to start testing with learners.

AI has the potential to revolutionise the way that we deliver education and training to the health and care workforce, through increased personalisation and adaptive learning. Our two pilots will provide valuable research into the power of AI in an education context.

The *Filtered* pilot, which is based on personalisation of resources around digital literacy, is open to everyone working in health and care. We have already had a number of volunteers and are keen that we reach as many people as possible. If you would like to be involved or can help recruit participants to test the tool, please contact [richard.price@hee.nhs.uk](mailto:richard.price@hee.nhs.uk).

## xAPI specification published

HEE's TEL Programme has contributed to the development of a major international publication on the technical implementation of the Experience API (xAPI), working with the Institute of Electrical and Electronics Engineers (IEEE) in the United States.

The xAPI standard enables the capture and exchange of individual learner data between systems such as learning management systems and e-portfolios. HEE has a long history of being involved with this work, being one of the pioneers of the standard and the only contributor from outside North America, where it was used in a pilot to track competence and individual progress following dementia training.



The document is a guide to the technical implementation of the xAPI standard, with case studies and benefits of implementation. The benefits and business section was led by TEL's Richard Price who coordinated the activity of the group and included a number of NHS case studies.



HEE is exploring its own use of xAPI to support capture of learning activity, improved reporting and personalised/adaptive learning. More details of this work will follow in future editions of TEL News.

The full report is available on the IEEE website: <https://www.tagxapi.org/ieee-technical-report/>. To find out more about xAPI, the IEEE report and our work on xAPI, please contact [richard.price@hee.nhs.uk](mailto:richard.price@hee.nhs.uk).

## Learning Solution update

Work is continuing on the Learning Solution and we will be at NHS Expo 2018 in Manchester next week if you want to find out more. We will be at the mini-theatre on the HEE stand at 1.35pm on Day one (5 September) and again at 9.30am on Day two (6 September). We're always keen to hear from prospective users so please come and say hello.

Health and Care  
Innovation Expo

## EC-TEL 2018



The 13<sup>th</sup> annual European Conference for Technology Enhanced Learning (EC-TEL) takes place in Leeds from 3 – 6 September 2018. The conference theme is 'Lifelong technology enhanced learning: Dealing with the complexity of 21<sup>st</sup> century challenges.'

HEE's TEL Programme is one of the conference sponsors and the event is an opportunity to find out more about TEL innovations in healthcare and to meet developers, researchers and educationalists from within the international TEL community.

Dr Neil Ralph, TEL National Programme Lead, is giving a presentation 'Supporting Graduate Training in Healthcare Professions' as part of the conference's Healthcare Education Track. It takes place on Wednesday 5 September in Conference Auditorium 2 at 11am.

The full conference programme is available here: <http://www.ec-tel.eu/index.php?id=872> and colleagues wanting to see if there are any spaces available are asked to contact [ectel2018@leeds.ac.uk](mailto:ectel2018@leeds.ac.uk)



### e-LfH update

The HEE e-LfH team is constantly updating existing and launching new e-learning sessions. For the schedule of when new sessions will be launched please click on this link: [www.e-lfh.org.uk/planned-programmes](http://www.e-lfh.org.uk/planned-programmes).

## Review and updates to General Practice (e-GP)

e-LfH is working with subject matter experts to undertake a review of 48 sessions within the General Practice 2012 Curriculum (e-GP) e-learning Programme.

This review includes e-learning modules covering the Royal College of General Practitioners (RCGP) curriculum such as Genetics in Primary Care, Care of People with Intellectual Disability, End of Life Care and others.

The sessions are being rewritten and updated by the RCGP and will be released to the e-LfH Hub throughout 2018.

The e-GP resource provides a programme of e-learning modules covering the RCGP curriculum. Each module is made up of reflective and interactive e-learning sessions that enhance GP training and support preparation for appraisal and revalidation.



For more information about the e-GP programme please visit: <https://www.e-lfh.org.uk/programmes/general-practitioners/>.

## Public Health Intelligence programme now live

An e-learning programme that introduces the basic principles of using data and information to understand the health and wellbeing of the public is now available.

Public Health Intelligence will introduce learners to concepts of health, definitions of public health, population measures, uncertainty and statistical significance and how to use this to make informed decisions and apply intelligence to gain understanding of population need.

The programme supports the increased use of Public Health England's (PHE) data and intelligence tools, and its wider training programmes.

It has been developed by PHE's Local Knowledge and Intelligence Service to support the classroom-based foundation and intermediate level training courses and completion of this e-learning programme is compulsory for all staff taking either of these courses.

More information about the courses, including booking information is available here: <https://www.e-lfh.org.uk/programmes/public-health-intelligence/>.

## Public Health Intelligence

Using data and information to understand the health and wellbeing of the public



- **e-Learning for Healthcare sessions in Foundation e-learning programme: Professional Capability: 13 Prescribes safely**



The Foundation e-learning programme has been developed specifically for Foundation doctors by the Academy of Medical Royal Colleges in partnership with Health Education England e-Learning for Healthcare (HEE e-LfH) and is approved by UKFPO.

Failure to prescribe safely is one of the commonest causes of untoward patient incidents in medical practice. Two case studies underpin and cover in detail how to safely and effectively prescribe a wide range of medicines. Adverse drug effects (ADE), risk management and safe transfusion practice are among the topics covered.

#### **Sessions:**

Prescription Writing  
 BNF Usage and Other Prescribing Information Sources  
 Safe Use of Injectable Medicines (Part 1)  
 Safe Use of Injectable Medicines (Part 2)  
 Safe Anticoagulation  
 Safe Prescribing in Renal Impairment  
 Prudent Use of Antibiotics (Part 1)  
 Prudent Use of Antibiotics (Part 2)  
 Prudent Use of Antibiotics (Part 3)  
 Safe Prescribing of Insulin  
 Adverse Drug Effects  
 Safer Medicine Use Through Concordance  
 Safe Prescription and Risk Management  
 Safe Practice the Doctors Perspective  
 Communicating Treatment Risks to Patients  
 Pain Management  
 Haemovigilance in the UK and ROI  
 Blood Group Serology  
 Requesting Procedure  
 Sampling Procedures  
 Collection Procedure  
 Administration Procedure  
 Management of Transfused Patient  
 Safe and Appropriate Transfusion Practice  
 Red Blood Cells  
 Adverse Effects of Transfusion  
 VTE Prevention in Secondary Care.

Do you need to complete parts of the curriculum on your e-portfolio which you do not cover in day-to-day practice? Try some of our free e-learning mapped directly to the Foundation Professional Capabilities (Training Outcomes) in the 2016 Foundation Curriculum.

You can sign in to the e-learning with your login supplied by e-LfH at the beginning of your foundation training: <https://www.e-lfh.org.uk/programmes/foundation-programme/>.

**For more information about anything you have read in this update please email [tel@hee.nhs.uk](mailto:tel@hee.nhs.uk).**

