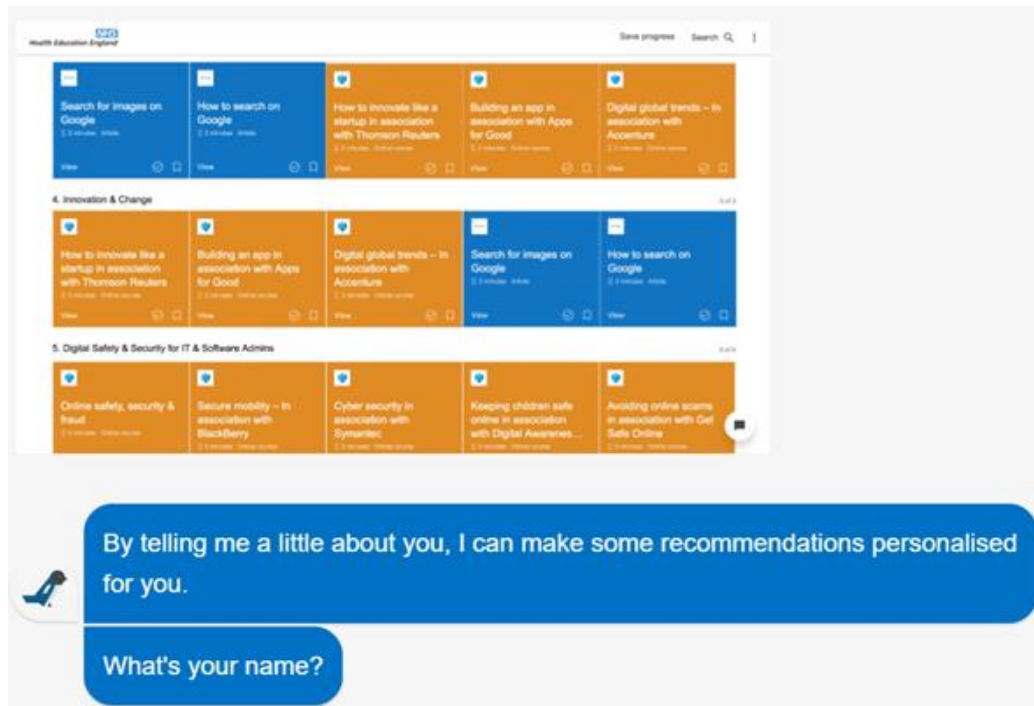


TEL NEWS

Welcome to TEL News



The TEL team are giving the NHS workforce the opportunity to test a new AI-powered tool and provide feedback. See page 2 for more detail.

TEL News is your monthly update keeping you up to speed with all that is Technology Enhanced Learning (TEL) in healthcare. If a colleague would like adding to the distribution list please ask them to email tel@hee.nhs.uk providing their contact details.

TEL Programme update

Develop your Digital Capabilities with our AI-Powered Tool



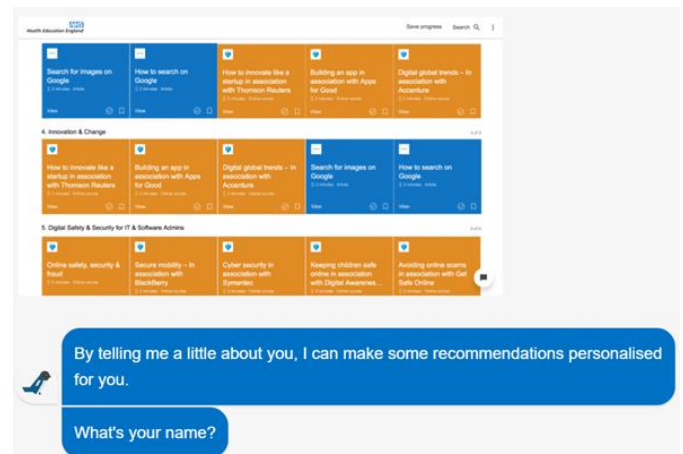
Do you know what your digital learning needs are? We have developed a self-assessment tool that provides personalised and unique recommendations based on your learning needs.

Our personalised learning tool uses resources and information from the HEE Digital Capabilities framework and has been developed with Artificial Intelligence pioneers Filtered. The tool recommends short learning resources to quickly help you improve a specific skill and longer resources to help you develop and enhance your wider skills and capabilities.

We would like to give you the opportunity to test the Alpha prototype of this tool yourself and with your networks across the NHS. We would be grateful if you could please cascade this to your health and care colleagues and networks. The tool is anonymous, and data won't be shared with your organisation.

How it works: You answer a few simple questions presented to you by our chatbot called Magpie. Magpie then analyses your answers and presents you with learning resources that it thinks are relevant to your needs. It's a little like Spotify or Netflix that learn your tastes, preferences and needs. The more you use it, the better it will become for you and for other users of the tool.

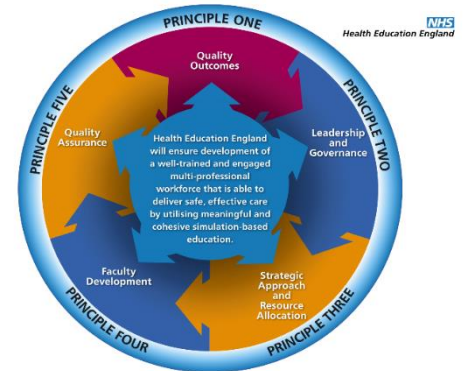
You can try it here: <https://hee.mp.filtered.com/>



As this is an Alpha prototype, it is still being developed, so if you have any comments, queries or feedback, please email: richard.price@hee.nhs.uk so we can incorporate your thoughts into future versions.

Simulation Based Education

The Key Performance Indicators (KPI) for the SBE Framework were recently discussed with the HEE Regional TEL Leads and some interesting points were raised regarding the red, amber and green (RAG) ratings and process management. The TEL Programme wants to emphasise that this first round KPI process is about ensuring and measuring engagement with the framework project as it moves towards a strategy. There are therefore no right or wrong answers. Reminders will be sent out shortly to ensure that the Sim Leads have begun the completion process. A virtual meeting with the Regional TEL Leads will follow in Jan to look at the first responses.



The first meeting of the SBE Assurance and Development Committee was held in December. This group will oversee and ensure that the KPI process is robust, providing assurance to the TEL steering group. It will also provide leadership for the future delivery and development of the strategy.

Further SBE News

Virtual Reality at Maudsley Simulation

Maudsley Simulation are currently developing ultra-high-definition, immersive, 360-degree videos to provide learners with a convenient way to access their informative content anywhere, at any time and through any internet ready device.



Collaborating with VIRTU, an online educational platform, Maudsley Simulation will come through any computer, tablet or smartphone with a high-definition panoramic experience, allowing users to be in the scenario virtually and experience being in the middle of the action as it unfolds.

Maudsley Simulation VR scenarios will therefore be able to provide a flexible and immersive method of asynchronous learning for anyone.

NWSEN Simulation Faculty Development Course

This month sees this educationally focussed course, Simulation Faculty Development, reach an important milestone for the North West of England. It is the 24th course of the year which will take the total number of candidates that have participated beyond 1000 since the course started in 2010.

The faculty development course comprises of five pre-learning e-learning modules which is then further developed with a face-to-face session run centrally and within organisations across the North West.

The course covers:

What is simulation-based learning?

Educational theory that supports simulation-based learning

What is Human Factors and Ergonomics?

Delivery of the simulation scenario

Debriefing the simulation learning event

For more information about the Simulation Faculty Development programme and for details of how to access it visit: <https://www.e-lfh.org.uk/programmes/simulation-faculty-development/>.

HEE and FutureLearn – MOOC Partners

MOOCs (Massive Open Online Courses) have become an increasingly popular means of learning and education across the higher education and healthcare sectors. MOOCs are a much more informal and social way to learn, delivered one step at a time, accessible on mobile, tablet and desktop, so you can fit learning around your life.



Following the successful launch of a genomics MOOC last year by HEE, the HEE TEL team have partnered with MOOC experts FutureLearn to increase the number of these courses which are delivered by HEE.

This complements our existing approach to e-learning resources and we are excited about the possibilities that this technology gives us in delivering courses in different ways to engage with different audiences. We already have a number of MOOCs in the pipeline which we will announce in future editions of TEL News as they become available.

We are also looking for opportunities to partner with organisations so please get in touch with richard.price@hee.nhs.uk if you are considering developing a MOOC.

Learning Solution design collaboration

Turning assumptions about user needs into certainties whilst designing the Learning Solution requires integrating a community of users into the design process. The Government Digital Service (GDS) are experts in this approach which places user needs at the heart of every process, design decision and feature implementation.

The Department of Health and Social Care (DHSC) and NHS Digital (NHSD) also have a wealth of knowledge and expertise when it comes to tried and tested design methods. We are collaborating with GDS, DHSC and NHSD to benefit from their insights and share best practice in areas such as user interface design, user experience and integration of users into the workflow. This will enable us to provide the best possible outcomes for our audience.

These collaborations allow us to design a better web experience, using tried and tested methods, whilst also highlighting that the most important collaboration is the relationship we nurture directly with our audience.

How can you get involved?

If you are interested in collaborating in the design of the Learning Solution please submit your details using our [user research sign-up form](#).

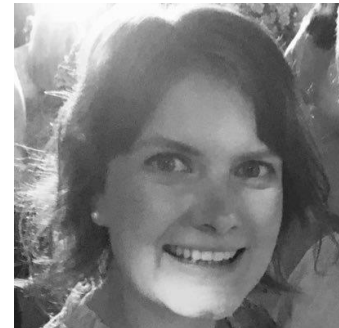
For more information about the Learning Solution please visit www.hee.nhs.uk/tel.

Meet the TEL team

In this month's issue of TEL News, we introduce more members of the programme team.

Charlotte Teager Programme Manager

Charlotte Teager is the programme manager for the national TEL team and coordinates the different projects the team is working on. Charlotte manages the relationship between the national and regional TEL teams as well as seeking opportunities for future collaboration within HEE and external stakeholders.



Alex Drinkall Stakeholder Manager, TEL Programme



Alex is the stakeholder manager for the TEL Programme which includes e-LfH. Alex's role is to raise awareness of the work of the team by utilising the various communications channels available, internally and externally, to tell the team's story, so that stakeholders are aware of the various pieces of work the team is involved in. A significant part of Alex's time is spent building and maintaining relationships with partner organisations which include Royal Colleges, NHS organisations, charities and other organisations across the health and care sector.



e-LfH update

The HEE e-LfH team is constantly updating existing and launching new e-learning sessions. For the schedule of when new sessions will be launched please click on this link: www.e-lfh.org.uk/planned-programmes.

New content added to the Educators Training Resource



HEE e-LfH has added new content to the Educators Training Resource programme to help educators in their role of supporting the careers of their junior colleagues.

The Supporting Career Conversations for Educators content can be found within the course, 06 – Guiding Personal and Professional Development as part of the Educators Training Resource programme. The content sets out the rationale for providing careers support to more junior colleagues, trainees and learners and the value of this to the organisation.

The course introduces the underpinning principles of having supportive career-focussed discussions with junior colleagues and trainees. The course also offers some techniques, approaches and insights into best practice to better equip colleagues to support learners to help them move their careers forward in a satisfying direction.

The final session explores different ways individuals may make decisions about their careers, introduces a framework to help structure career conversations and demonstrates how even a five-minute conversation can make a positive difference to a colleague's career.

The programme has several links to further resources to support this role and is available via the e-LfH Hub and the Electronic Staff Record (ESR).

For more information on the Educators Hub visit: <https://www.e-lfh.org.uk/programmes/educator-hub/>.

HEE's e-Learning for Healthcare's Foundation e-Learning Programme: Professional Capability 20



Developed by the Academy of Medical Royal Colleges in partnership with HEE e-LfH and approved by UKFPO – Foundation is a free e-learning programme for Foundation doctors.

December 2018

Do you need to complete parts of the curriculum on your e-portfolio which you do not cover in day-to-day practice? If so, try some of our free e-learning mapped directly to the Foundation Professional Capabilities (Training Outcomes) in the 2016 Foundation Curriculum.

The e-learning sessions in Professional Capability: 20 “Contributes to quality improvement”, look at audit and evidence based practice. It outlines the study designs used in medical practice. You are provided with a guide to developing a structured research strategy which will help you find journal articles relevant to your clinical questions. How to evaluate a journal article is discussed using a linked example paper from the British Journal of Anaesthesia.

Sessions:

Audit

Evidence Based Medicine in Clinical Practice

Common Study Designs in Clinical Research

Explaining Evidence/Guidelines/Protocols to Patients

Guidelines in Clinical Practice

Searching the Literature and Locating Papers

How to Review a Paper

Sign in to the e-learning with your login supplied by e-LfH at the beginning of your foundation training: <https://www.e-lfh.org.uk/programmes/foundation-programme/>.

Background on Foundation Script



Developed by Health Education England and University of Birmingham, SCRIPT (Standardised Computerised Revalidation Instrument for Prescribing and Therapeutics) is an e-learning programme to improve prescribing competency for Foundation doctors.

In the UK, the majority of prescribing in hospitals is undertaken by Foundation doctors in the first and second year of foundation training. SCRIPT was created in 2011 by a team of clinical pharmacists and clinical

pharmacologists working in both education and healthcare, to encourage safe, effective and rational prescribing.

The programme comprises 47 e-learning modules relating to prescribing and therapeutics across a wide range of subject areas. All modules have been authored by specialist healthcare professionals and externally peer reviewed to ensure accuracy and relevance to practice.

The 47 modules are divided into seven categories:

- Principles of Prescribing
- Prescribing in Medical Emergencies
- Managing the Risks of Prescribing

December 2018

- Therapeutic Groups
- Clinical Governance
- Learning Outcomes
- Advanced Prescribing.

Each module has the same core components and starts with a brief session overview and recommendations for any reading that may facilitate progress through the module and learning outcomes. Upon completion of the module, a certificate will be made available which can be uploaded to learners' ePortfolio.

For more information about the SCRIPT e-learning visit: www.safeprescriber.org.

Diabetic Foot Screening Interactive Assessment now live



DIABETIC FOOT SCREENING INTERACTIVE ASSESSMENT

A new e-learning tool aims to improve practices in footcare for patients with diabetes.

The Diabetic Foot Screening Interactive Assessment has been designed to be used by health and social care professionals who care for people with diabetes and who already have a knowledge of the procedures and skills involved. A complementary e-learning programme is now available.

Given the variation in diabetes footcare across the country, the assessment tool aims to improve screening practices and increase prompt and appropriate referrals to the diabetes specialist foot services.

The assessment will take approximately 30 minutes to complete and was developed in partnership between HEE e-LfH and Sussex and East Surrey Sustainability and Transformation Partnership (STP). The tool is also supported by the South East Clinical Network, the College of Podiatry and The British Association of Prosthetists and Orthotists (BAPO). It will be rolled out as part of a National Diabetes Treatment and Care Programme across the Sussex and East Surrey STP and beyond.

For more information about the e-learning assessment and for details of how to access it visit: <https://www.e-lfh.org.uk/programmes/diabetic-foot-screening-interactive-assessment/>

The e-learning assessment is available via the e-LfH Hub and the Electronic Staff Record (ESR).

Reminder - Blended Learning for Safeguarding Adults Training



The new national Intercollegiate Document '*Safeguarding for Adults: Roles and Competencies*', published over Summer 2018, defines the safeguarding knowledge, skills and attitudes required by all staff working in healthcare settings. The document specifies the safeguarding competencies required at levels 1 to 5, and additionally, for executive and non-executive directors at Board level.

HEE already provides level 1 and level 2 safeguarding adults e-learning. Work is now underway to co-produce a learning design with subject matter experts for levels 3 and 4. This phased programme of work is envisaged to be well underway in Spring 2019. We will update on the progress of this project at regular intervals; as we are mindful that commissioning cycles will be requesting this invaluable resource in the new financial year.

If you would like to know more about the project or wish to get involved, please contact Alison.Potter@hee.nhs.uk.

Population Wellbeing Portal ready to launch

Early in 2019 HEE will launch its Population Wellbeing Portal. The portal, with free access to those who can positively impact public health and wellbeing, will offer education, training and professional development resources to help deliver improvements in public health and prevention.

The portal will provide a central location for e-learning resources, reading material, guidance, toolkits, videos, factsheets and many more resources relating to population health. It will bring together material from multiple sources including resources from HEE, Public Health England (PHE), the Academy for Public Health for London and the South East, the Faculty of Public Health plus others. The Population Wellbeing Portal will link with "All Our Health", PHE's framework of evidence to guide healthcare professionals in preventing illness, protecting health and promoting wellbeing.

The aims of the Portal are to:

- Centralise access to knowledge resources on public health and population health
- Make it easier to find the resources needed to support the public to protect and improve their health
- Equip people to help the public to stay healthy and deal with threats to their health.

For more information about anything you have read in this update please email

tel@hee.nhs.uk