

# TEL NEWS

## Welcome to TEL News



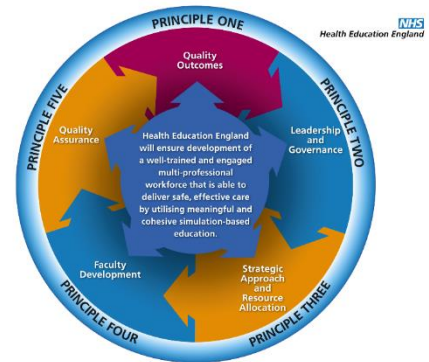
The HEE TEL team attended the Topol Review launch to hear how the NHS is preparing the healthcare workforce to deliver the digital future. See page 4 for the full story.

TEL News is your monthly update keeping you up to speed with all that is Technology Enhanced Learning (TEL) in healthcare. TEL News includes information from Health Education England's (HEE) TEL Programme team, the e-Learning for Healthcare Programme, e-Learning and simulation Leads across the local offices and other updates we think you will find useful. We're keen to spread the news about TEL so would be grateful if you would share it throughout your own networks. If a colleague would like adding to the distribution list please ask them to email [tel@hee.nhs.uk](mailto:tel@hee.nhs.uk) providing their contact details.

## TEL Programme update

### Simulation Based-Education KPI update

The Simulation Based-Education Framework KPI returns have now been received and a useful follow-up review with the regional TEL leads was held earlier this month. Feedback from the TEL leads highlighted that reviewing and rag-rating the KPIs gave an opportunity for developing new relationships and firming those that already exist. In addition, it emphasised the need for moderation and triangulation of evidence. A new step in the process has now been proposed and will be discussed within the SBE Assurance and Development Committee in March.



### Further SBE news



A small team from the simulation and immersive technologies workstream visited the Simulation Centre at University Hospitals of North Midlands NHS Trust and the Medical Defence Services Sim Centre at DMS Whittington in Lichfield.

The team in Stafford is focusing on Extended Reality Learning (ERL) and the photo shows just one of the diverse backgrounds that can be used within the lab.



Dr Neil Ralph, TEL Programme Lead, visited the 'Jungle room' at the Simulation Centre in DMS Whittington. The team has developed specific simulation areas that emulate, as close as possible, the environments that learners will find themselves in when they receive their postings.

### Learning Solution

The last couple of weeks have signified the beginning of a very active user research period pivotal for the on-going development of the private beta solution. Following a successful show and tell to the TEL Programme's Clinical Education Advisory Group (CEAG), in recent weeks we have broadened participation to a group of user research volunteers. This sample group has experienced a walk-through of prototype home and search screens and the overarching concepts driving the proposed design for the Learning Solution. Following the session, participants have been given time to digest and feedback around the overall design, format, layout and terminology used and provide any additional comments and/or suggestions. Members of the Learning Solution service team are now in the process of collating, analysing and reviewing feedback before informing our stakeholders of key outcomes. This feedback has already begun to influence the design, following the approach defined by the Government Digital Service's (GDS) Digital Service Standards.

If you would like to play a role in the user research activities, please register your interest and complete a short online survey [here](#). By completing the survey, you are providing us with a greater understanding of how you wish to be involved, your preferred methods and formats of research to be involved in. Thank you, our users' help in shaping the Learning Solution is vital.

## The Topol Review launch



On Monday 11 February, members of the TEL team attended and exhibited at the launch of the Topol Review. The recently published Topol Review outlined recommendations to ensure the NHS is the world leader in using innovative technology to benefit patients. It will involve implementing technologies such as genomics, digital medicine, artificial intelligence and robotics at a faster pace and on a greater scale than anywhere else in the world.

HEE are launching 20 new digital fellowships to incorporate digital health expertise within their careers and pursue training in informatics and digital health. This is an exciting opportunity for all NHS clinical staff (AFC Band 6 and above/Post Foundation Training) including doctors, nurses, allied health professionals, dentists, healthcare scientists, pharmacists and others to join the NHS digital revolution. It is an exciting step in how the NHS will prepare staff for a digital future.

Applications are now invited for these digital fellowships, which will look at improvement and transformation initiatives most commonly underpinned by digital technologies. The main impetus of the fellowship programme is on transformation of care enabled by technology and the skills, competencies and knowledge to successfully deliver on this.

For more details or to apply for a fellowship visit: <https://topol.hee.nhs.uk/topol-digital-fellowships/>.



## TEL HEAT Awards

The criteria for the HEE HEAT Awards has now been extended, so the Digital Innovator of the Year category is now titled Digital and TEL Innovator of the Year.

The closing date for submissions is midnight on 5 April 2019, and nominations are now open for innovations in all TEL related activities. It is a great time to share and herald the exciting work that is being done. To nominate visit [the HEAT awards portal](#).

## Learning Technologies 2019

Members of the HEE TEL team attended the Learning Technologies 2019 exhibition on 13 and 14 February at London's ExCel centre. Learning Technologies is Europe's leading workplace learning exhibition and one of the largest in the world, second only to DevLearn in Las Vegas.

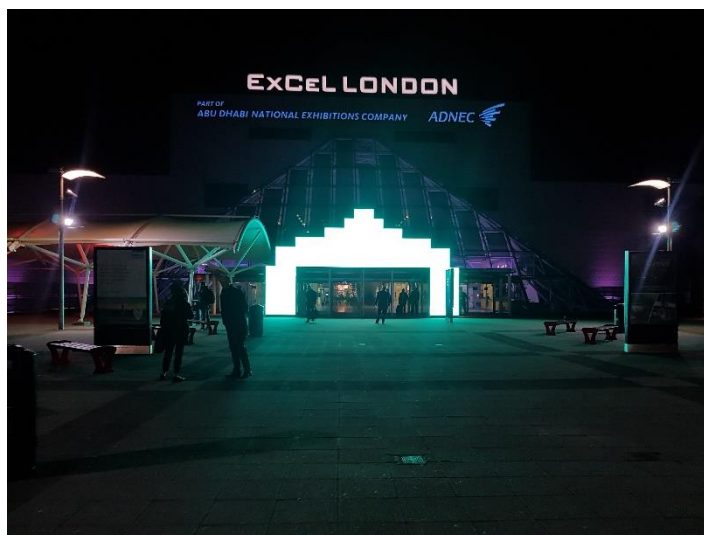
The event is an important date in the TEL team's calendar as it provides an opportunity to build relationships with current and future suppliers and to horizon scan for new and emerging learning technologies through visits to the exhibitors, listening to talks and through the numerous fringe events.

Artificial intelligence was a clear emerging area of development as suppliers work to implement more personalised learning and provide improved support for learners through chatbots and other AI-powered tools.

However, unlike previous exhibitions, there was a distinct shift from technology vendors purely focusing on the technology delivery. There was a greater recognition of the educational needs and the need for technology to enhance the human experience which is certainly what we have always advocated within the HEE TEL programme. Enabling interoperability and developing the learning ecosystem are key to improving this human experience and it was reassuring to see many of the suppliers recognising this.

Video and shorter, bite-size learning were among the technologies which were emerging from suppliers, with vendors recognising that lengthy, large screen courses were no longer what motivates and drives learners to view content. This is certainly echoed by our own experiences as the majority of users accessing the e-LfH Hub prefer smaller screens to play content, with some of our programmes being accessed through mobile devices.

We will continue to analyse the emergent and future learning technology trends which will drive the education and learning of the health and care workforce in the coming years.



• **Meet the TEL team**

In this month's issue of TEL News, we introduce members of the regional TEL team.

**Dr Ruth Carlyle MCLIP**  
**Head of LKS and TEL, HEE Midlands and East**



Ruth is Head of Library and Knowledge Services (LKS) & TEL in the Midlands and East. She is a health librarian and a health promotion specialist by background, having spent most of her career working within the voluntary sector. Her e-learning and e-resources development experience includes resources for Macmillan Cancer Support professionals and for Multiple Sclerosis nurses. If you follow Ruth on Twitter @RuthCarlyle you will see that she also has an academic interest in public involvement in the NHS.

**North TEL Support Team**

Based at Yorkshire Ambulance Service in York, the team has delivered the TEL e-learning support for the last 11 years. Initially for NHS organisations in Yorkshire and the Humber, now they provide support to all Trusts in the North of England working closely with Seán Bradbury, HEE TEL Lead for the North.



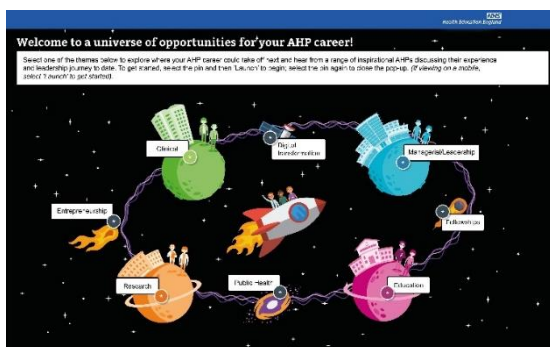
As well as hosting, managing and maintaining the regional servers where Trusts can host their local e-learning content, they act as a central point of contact for TEL administrators. In addition to being part of the regional networks, the North TEL support team is involved in national networks such as HEE TEL leads meetings and other HEE TEL projects.



**e-LfH update**

The HEE e-LfH team is constantly updating existing and launching new e-learning sessions. For the schedule of when new sessions will be launched please click on this link: [www.e-lfh.org.uk/planned-programmes](http://www.e-lfh.org.uk/planned-programmes).

**Animation and careers resource for AHPs launched**



HEE's Allied Health Professionals (AHP) team and e-LfH have developed a new animation and careers resource that aims to inspire, motivate and unleash the often-untapped talent of AHPs across the country. The careers resource includes eight potential areas for career development. Within each area, it provides a wealth of information to highlight the wide range of career development options, all whilst continuing to work clinically if desired.

AHP colleagues taking different career journeys from across the 14 disciplines appear on film. Visit the resource to find out what has helped them, how they have overcome barriers and what they enjoy most about their work.

Take a look and venture into the universe of opportunities that could help shape AHPs' career paths allowing them to make an even bigger impact on people's health and wellbeing.

The careers resource is hosted on the HEE e-LfH website and can be accessed here: [www.e-lfh.org.uk/ahp](http://www.e-lfh.org.uk/ahp).

## Foundation e-learning update



e-Learning for Healthcare sessions in Foundation e-Learning Project: Professional Capability: 3 Behaves in accordance with ethical and legal requirements

Developed by the Academy of Medical Royal Colleges in partnership with HEE e-LfH and approved by UKFPO – Foundation is a free e-learning programme for Foundation doctors.

The Mental Health Act protects the rights of vulnerable adults and children; a group of the e-learning sessions outline the responsibilities of the people who care for them.

You will find out how the GMC supports your career development, looking at the topics of registration, the Foundation Programme and your career development.

There are sessions which focus on the safeguarding of adults and children in primary and secondary care.

Finally, the importance of protecting data is explored in sessions about information security and the Data Protection Act.

### Sessions:

Confidentiality and Privacy

Mental Health Act

Mental Capacity

Mental Capacity Assessment

Capacity and Difficult Consent

Use of Restraint

HIV Testing

DVLA

How to avoid the GMC Disciplinary

Committee

Infection Control: Diarrhoea in an Inpatient

Completion of the Medical Certificate of Cause of Death Part 3

Safeguarding Vulnerable Adults

GMC Registration and Post Graduate Observation

Safeguarding Adults: Level 2

Safeguarding Children: Level 1

Safeguarding for All Staff Working in a Healthcare Setting

Safeguarding Children: Level 2 Part A - Recognition

Safeguarding Children: Level 2 Part B - Response in Secondary Care

Safeguarding Children: Level 2 Part C - Record in Secondary Care

Safeguarding Children: Level 2 Part B - Response in Primary Care

Safeguarding Children: Level 2 Part C - Record in Primary Care

Information Security

An Introduction to the Data Protection Act.

Do you need to complete parts of the curriculum on your e-portfolio which you do not cover in day-to-day practice? If so, try some of our free e-learning mapped directly to the Foundation Professional Capabilities (Training Outcomes) in the 2016 Foundation Curriculum.

You can sign in to the e-Learning with your login supplied by e-LfH at the beginning of your foundation training: <https://www.e-lfh.org.uk/programmes/foundation-programme/>.

### Children's Oral Health e-learning programme now live



HEE e-LfH has worked with the Faculty of Dental Surgery, the Royal College of Surgeons and UCL Eastman Dental Institute and Hospital to develop a new Children's Oral Health e-learning programme.

This free e-learning programme provides information and advice about children's oral health. It is aimed at parents, expectant mothers, early years healthcare workers, teachers, nurses, GPs and the public.

Children's Oral Health Advice programme aims to help learners support children to maintain good oral health. It covers the main causes of tooth decay and simple actions that can be taken to prevent the problem. It also explains when a child's primary (baby) and adult (permanent) teeth start to appear, and what you should do if a tooth is knocked out. By the end of the session users will have developed their knowledge of oral health and be more confident in providing children's oral health advice.

The programme consists of one e-learning session that will take about 20 minutes to complete with a number of self-assessment questions throughout the learning which enable understanding of the key points to be checked.

Further e-learning sessions are planned for 2019 to support the understanding of children's oral health advice for the health and care workforce.

For more information about the e-learning programme and for details of how to access it visit: <https://www.e-lfh.org.uk/programmes/childrens-oral-health/>.

The e-learning assessment is available via the e-LfH Hub and via AICC links.

February 2019

## Level 3 Adult Safeguarding learning design proposal now available for feedback

Two workshops took place in January, with over 50 safeguarding professionals attending from acute, mental health and primary care, to co-produce learning designs for levels 3 and 4 safeguarding adults training. Since then, we have been refining the learning designs and drafting the proposals to request funding to develop the final designs.



The proposal for level 3 is now available for wider comment and feedback via the Safeguarding Adults National Network (SANN) online portal until Friday 8 March 2019. The level 4 proposal will also be made available for comment shortly.

Each proposal will be taken to the National Safeguarding Steering Group for sign off and funding sought from HEE. Any new developments are likely to begin from April 2019.

You can keep informed about this work via SANN virtual network, following @alisonpotter on Twitter or by email [alison.potter@hee.nhs.uk](mailto:alison.potter@hee.nhs.uk). For access to the SANN online portal please contact Alison Potter.

## e-ICM Intensive Care Medicine structure changes

### Removal of module 7

During a recent review of the e-ICM programme it became apparent that some modules are used more than others. Therefore, to streamline and improve the offering of sessions within the programme, we have removed module 7 (basic sciences) from the e-ICM programme.



However, users are still able to access this module via the e-LfH [Anaesthesia \(e-LA\) programme](#) 'Core Training (Basic Sciences)' Module.

Please note that after the removal of this module, modules 8, 9 and 10 will become modules 7, 8 and 9 respectively. Your prior session completion and activity will still be recorded on the LMS system and the ICM e-portfolio.

### New learning paths

We have recently completed a review of the e-ICM programme and as a result have developed two learning paths to enable users to quickly and easily access sessions. These are now available within the e-ICM programme on the e-LfH Hub.

**For more information about anything you have read in this update please email [tel@hee.nhs.uk](mailto:tel@hee.nhs.uk).**