

# Consultant and Junior Doctor Redeployment

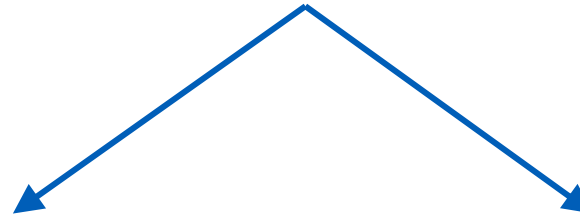
Decision Tree for Critical Roles  
*to maximise benefit where it is needed most*

14<sup>th</sup> January 2021

NHS England and NHS Improvement



# Redeployment guide for doctors with <3months critical care experience:



Registered Support Clinician (RSC)
At bedside
Mirror nursing working pattern

Surge Doctor
On ward round
Following medical workload

For most Trusts, there is a critical shortage of  
Registered Support Clinicians

## Registered Support Clinician (RSC)

The RSC is deployed to critical care areas during surge or caring for patients on wards who are more unwell than usual (deteriorating/ICU step down).

A new role, necessary to support surge models of care

The skills and tasks of the RSC are described in a skills passport, but the role is not uniformly utilized ([download passport](#))

Training available via [COVID-19 ICU Remote Learning Course \(CIRLC\)](#)

Self-directed learning on page 5 of [passport](#)

Use [FICM COVID passport](#) as a reflective log

## Domains of competence

### Safety

(PPE, record vital signs, bedspace prep)

### Documentation

(using the ICU documentation system)

### Equipment

(use syringe drivers, volumetric and feeding pumps)

### Medication

(administer routine drugs via peripheral and central routes)

### Arterial line management

(draw and process ABGs)

### Care and Management of Nasogastric Tubes

(process for confirming + documenting correct position + operation of NGT)

### Airway

(suctioning and tracheostomy basics)

### Neurology

(delirium management)

## Surge Doctor

Supporting the intensivist within the MDT ward round and associated jobs list

Learning resources found [here](#) (under “Step Two” – Surge Doctor)

Use [FICM COVID passport](#) as a reflective log

## Domains of competence

### Safety

(PPE, bedspace orientation, team communication)

### Airway

(recognise + escalate ETT and tracheostomy airway compromise)

### Breathing

(awareness of ventilators, chest drains, NIV, weaning + CXRs)

### Circulation

(venepuncture, assess lines, fluid balance and prescription)

### GI

(knows and follows process for NGT placement confirmation)

### Neurology

(assess neurological status)

### Medication

(prescribe ICU medications inline with protocols, Abx stewardship, VTE + GI prophylaxis, BM control)

### Assessment and Monitoring

(take and record vitals, A-E Ax, ABG interpretation)

### Transfer and DC

(completes documentation for t/f or DC)

# Essential Skills for All Redeployed Staff

## What is purpose of this document?

This document summarises COVID response essential skills for all staff and have been divided into 7 steps:

Steps	Activity
<u>1–6</u>	Access to COVID specific self-directed learning: <ul style="list-style-type: none"> <li>• Create an e-LfH login (if don't have already – free)</li> <li>• Know your infection prevention &amp; control</li> <li>• Using equipment for the first time</li> <li>• Taking and recording observations</li> <li>• Fundamentals of patient hygiene</li> <li>• Staff support and wellbeing</li> </ul>
<u>7</u>	Documenting your skills – RSC and/or FICM passport

## Who are we and how to get in touch?

The London Transformation and Learning Collaborative (LTLC) was formed in July 2020, to support London with the cross-skilling of the London NHS workforce for critical care, through education and training ([See here](#)).

Please get in touch if you have any questions [ltlc@hee.nhs.uk](mailto:ltlc@hee.nhs.uk)

# Step 1: Create an e-LfH login

*Tips for using this document*



Create an e-learning for Health login

There are tutorial videos on that here

Click on icons to access a direct link to resource...

...but to log your learning via e-LfH, click the hyperlink in the bottom box

# Step 2: Know your infection prevention & control



Public Health  
England

Infection  
Prevention and  
Control Quick  
reference guide

[Read this  
document](#)

 YouTube

Donning PPE

[7 minute video](#)

 YouTube

Doffing and  
Disposal of PPE

[5 minute video](#)

 YouTube

Handwashing

[1 minute video](#)

 YouTube

Aseptic Non-  
touch  
Technique

[12 minute  
video](#)

# Step 3: Using equipment for the first time



Orientation  
to the ICU  
bedspace

360  
interactive  
images



Equipment  
instruction  
matrix

Use this  
when using  
unfamiliar  
equipment



Processing  
a blood gas  
sample

4 minute  
video

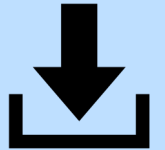


Proning

7 minute  
video



# Step 4: Taking and recording observations



Richmond  
Sedation  
Scale

Blood  
pressure

Respiratory  
rate

Pulse  
(heart rate)

Temperature

Fluid Balance

[Read this  
quick  
reference  
guide](#)

[3 minute  
video](#)

[2 minute  
video](#)

[3 minute  
video](#)

[3 minute  
video](#)

[Read this 1  
page guide](#)

# Step 5: Fundamentals of patient hygiene

 YouTube

Perform a  
bed bath

5 minute  
video

 YouTube

Washing a  
patient's  
hair

3 minute  
video

 YouTube

Using a  
shampoo  
cap

4 minute  
video

# Step 6: Staff support and wellbeing



Psychological  
preparation  
for pandemic

6 minute  
video



Managing  
your health  
and  
wellbeing

Link to  
webpage



Managing  
your mental  
wellbeing

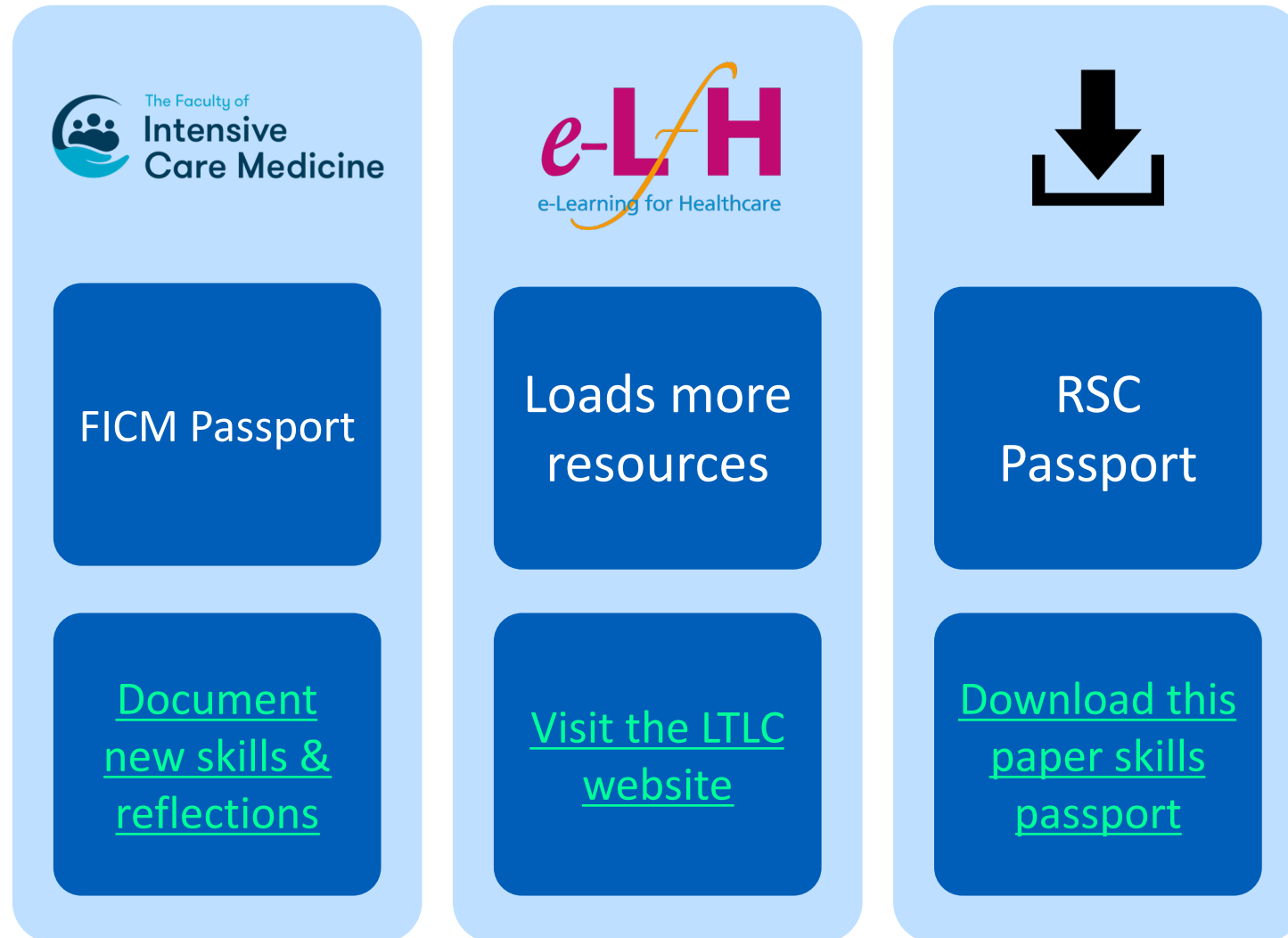
Link to  
webpage



Signposting  
to routes  
for support

Link to  
webpage

# Step 7: Passports and more learning



Please email  
[ltlc@hee.nhs.uk](mailto:ltlc@hee.nhs.uk) with any  
questions

